

A photograph of two men in a professional setting. An older man with grey hair, wearing a dark blue suit jacket over a white shirt, stands and leans over a desk. A younger man with brown hair, wearing a light blue button-down shirt, is seated at the desk, smiling as he looks at a document. He is holding a blue pen over the document. On the desk, there is a white mug and some papers. The background is a bright, modern office with large windows and blue vertical accents.

SLII®.

POWERING INSPIRED LEADERS



Great Leaders Lead with

SLII.

Understand their teams' needs

Are present and authentic in every conversation

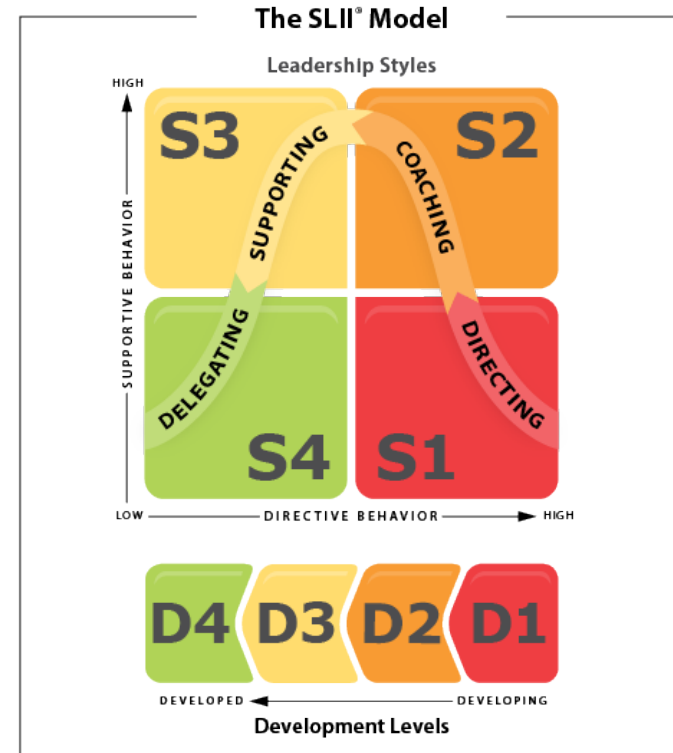
Use a common language to discuss performance, deepening engagement

Help leaders at all levels accelerate through the learning curve

Inspire the people around them

SLII. Meaningful Connections = Exponential Impact

SLII® teaches leaders how to inspire their teams to exceed expectations—no matter the situation. When all leaders adopt this approach, exponential results follow.



Blanchard's Situational Leadership® II

- The most widely taught leadership model in the world
- Used to train more than 5 million managers at leading organizations
- Validated through decades of research
- Universally impactful at all levels across an organization
- Proven results



Situational Leadership® II Teaches Leaders

- **Goal Setting** – getting alignment on what needs to be done and by when
- **Diagnosing** – assessing someone's competence and commitment on a specific goal or task
- **Matching** – providing the appropriate leadership style



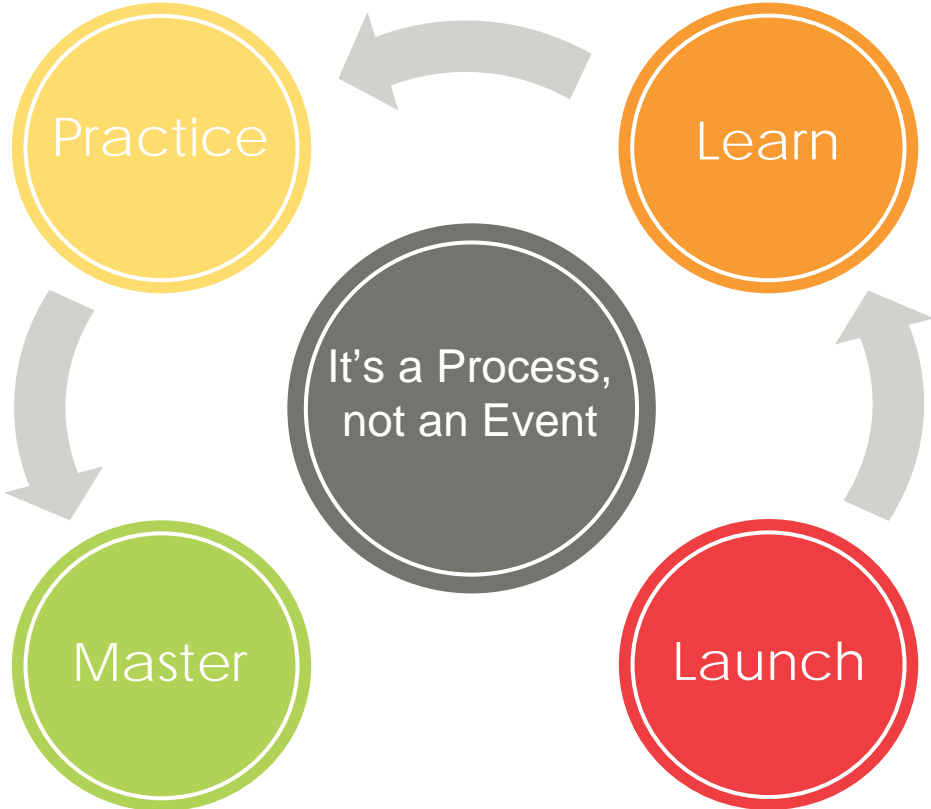
Proven, Time-tested Leadership Model



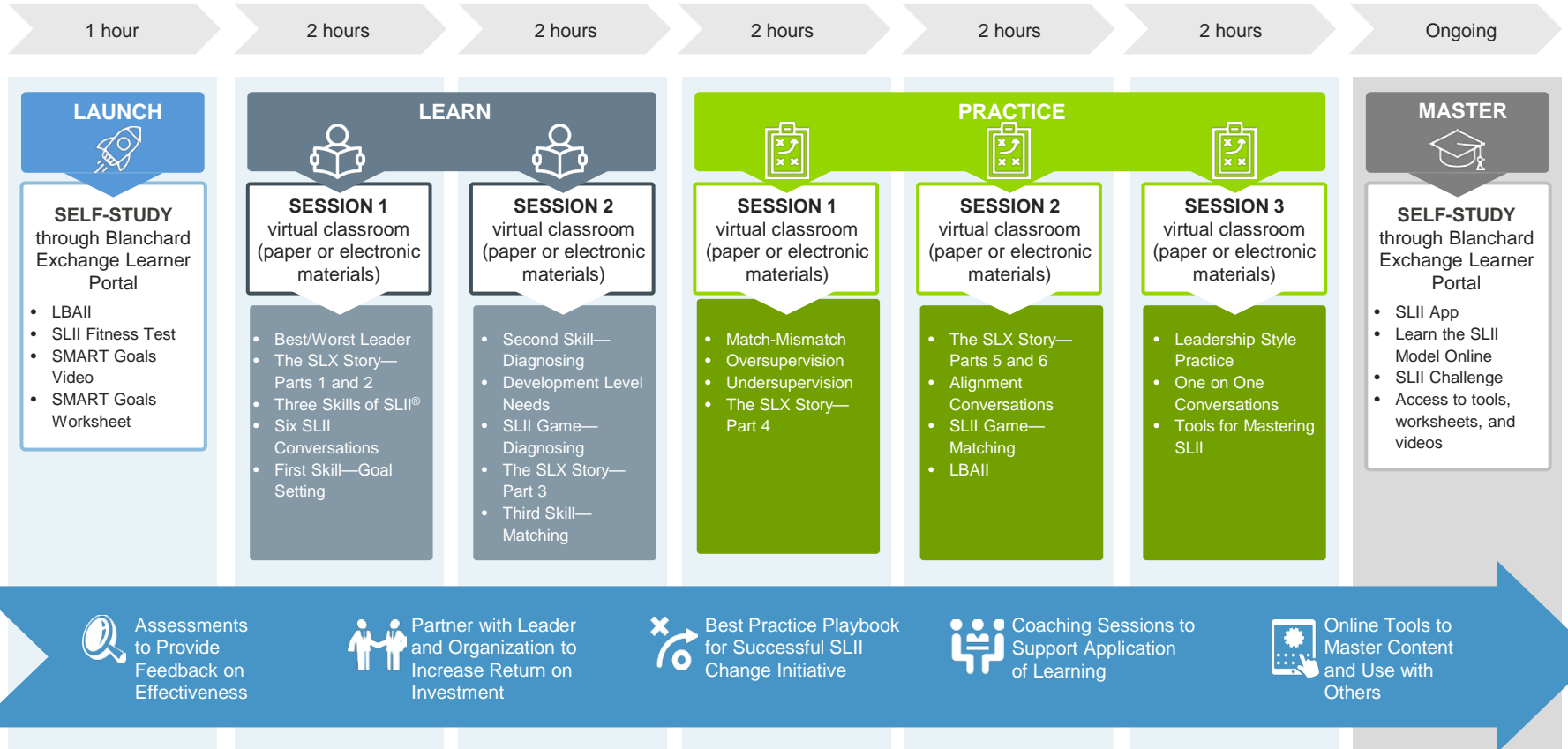
An easy-to-understand,
easy-to-remember,
easy-to-use framework

That helps promote high-quality
conversations about performance and
development

The SLII Experience™



The SLII Experience™ - virtual design





LBAIL® Self Assessment

SLII® Fitness Test

LE-4000

1. Knows how to use the tool	2. Understands the tool	3. Knows when to use the tool	4. Knows how to use the tool	5. Knows when to use the tool	6. Knows how to use the tool
1	2	3	4	5	6

Rate yourself: 1 2 3 4 5

My team members are likely that:

1. One has clear agreements about their goals.
2. One has clear goals.
3. They understand how their goals are related to the organization's goal.
4. They are more aware than motivation on their goals.
5. They have clear objectives on their goals.
6. They understand what they need from me as a leader to achieve their goals.
7. I understand their needs on the goal they are working on.
8. I can be effective when I reach out to them.
9. They can go on or on to teach them how to do a specific goal if they know the organization.

©2018 The Ken Blanchard Companies. All rights reserved. Item # 4000-01-0001. This document is not to be reproduced or distributed without the express written permission of Ken Blanchard Companies.

The SLII Fitness Test



Video – SMART objectives

SLII® Goals Worksheet

Goal Setting

1. Think of an individual you lead who has the potential to develop.
2. Identify three goals or key tasks that you would like the person to accomplish.
3. Write each goal or task in terms of a "what needs to be done, when" statement.

Examples of SMART Goals

- To use approval for the higher standards on the new building design within the next two months.
- To design a "to" for the engineering design flow on the new building to flow to that of all the environmental standards are achieved.
- To obtain accurate and timely forecasts on a bi-monthly basis for the next 12 months.
- To increase the number of positive customer comments by 30% over the next six months, from an average of 3 per employee to 3.9 per employee.
- To organize a workshop to review and assess new engineers within the next three months.
- To organize four forums over the next year to promote sharing of best practices across the company.

Goals For	Goal or Task	Goal or Task	Goal or Task
	What needs to be done, when?	What needs to be done, when?	What needs to be done, when?

Complete this worksheet, print it, and bring it to your Situational Leadership® training session.

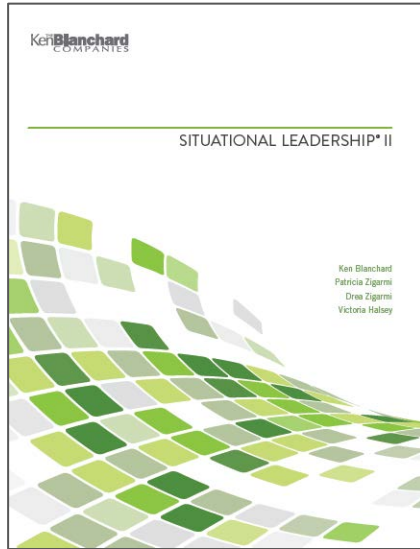
©2018 The Ken Blanchard Companies. All rights reserved. Item # 4000-01-0001. This document is not to be reproduced or distributed without the express written permission of Ken Blanchard Companies.

SLII Goals Worksheet

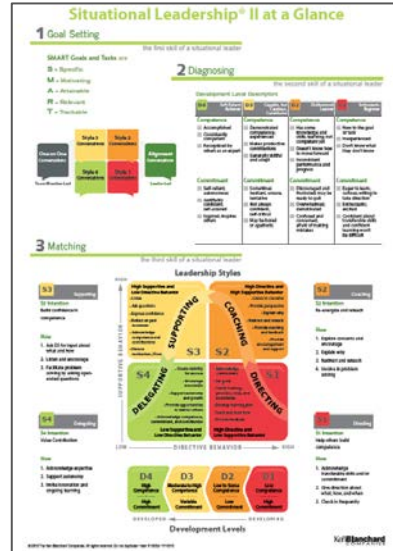
LEARN



Videos



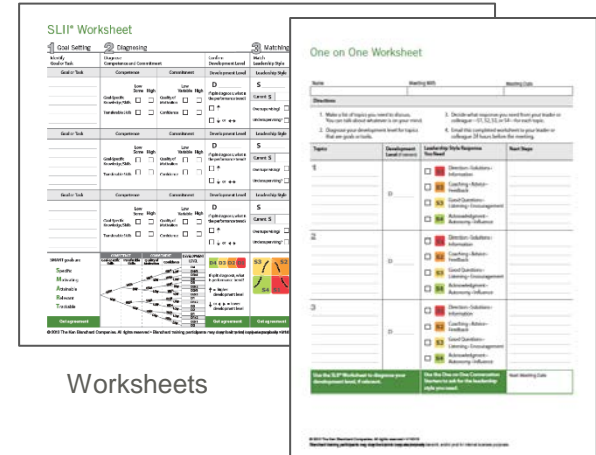
SLII® Participant Workbook



SLII® Poster



SLII® at a Glance



Worksheets





MASTER: Share SLII with Your Team

The best way for a leader to start using their Situational Leadership® II skills is to help their people understand the model so they can agree on development level and the leadership style needed. Leaders have access to a kit to help them share the SLII Model with their team members:

- The power of SLII video
- Access to the SLII App for your Team members (up to 10 people)
- Learn the SLII Model Article
- Learn the SLII Model PowerPoint.

The Power of SLII Video



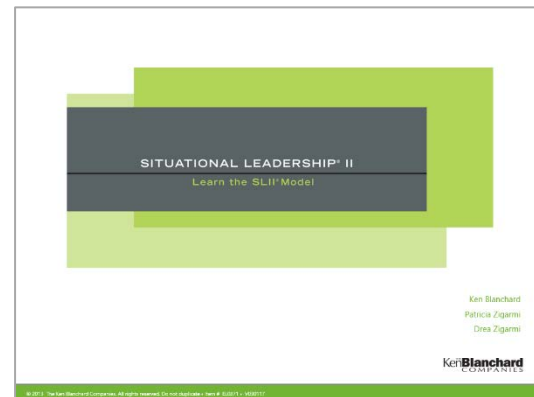
SLII App



Learn the SLII Model Article



Learn the SLII Model PowerPoint





MASTER: SLII App



Get the SLII App on your computer, tablet, or phone. Diagnose your team members' development levels and get tips on matching.

- SLII at your fingertips
- Mobile app for smartphones and tablets
- More effective conversations
- Diagnosing on the go
- Instant coaching for managers



MASTER: Take the SLII Challenge

Develop your situational leadership skills while getting your work done by completing 12 steps in the SLII Challenge.

SLII Challenge

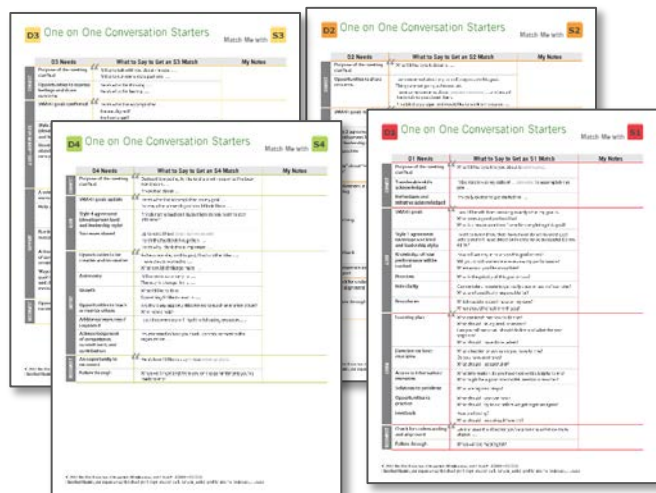
4 of 12 done

Click on any of the 12 challenges to practice using those SLII skills. You can complete the challenges in any order.

Teaching Others SLII ✓	Development Level Dashboard ✓	Alignment Conversations CONTINUE	One on One Conversations START
Style 1 Conversations ✓	Style 2 Conversations ✓	Style 3 Conversations START	Style 4 Conversations CONTINUE
One on One Conversations with My Leader START	Leadership Style Feedback CONTINUE	SLII Fitness Test CONTINUE	Share Your Success Story CONTINUE



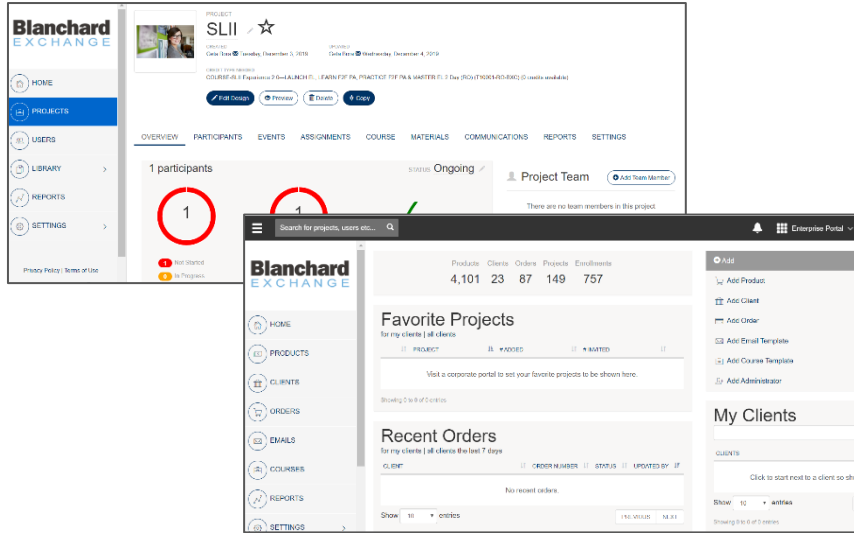
MASTER: Access to resources



Use these resources as you apply your learnings. You have access to these files and resources for 1 year:

- SLII worksheet
- SLII Conversation starters
- One on one worksheet
- One on one Conversation starters
- SLII Leadership Style Checklist
- SLII Game cards matching
- SLII Game leader guide
- SLII Game answer sheet
- SLII videos (13 videoclips)

About Blanchard Exchange



Blanchard Exchange is an online portal that guides and enriches the Blanchard learning experience. Using our best-practice delivery methods and time-tested product designs, it offers an easy and convenient way to receive products electronically.

As a place to exchange learning materials, tools, progress, and reports, Blanchard Exchange gives learners access to what they need, when they need it.

Benefits for the learners:

Learners use this online resource before, during, and after their training. Blanchard Exchange encourages lifelong learning for people on the go by providing access to tools for applying new skills back on the job. It provides a convenient way to receive Blanchard products, and, for many participants, guides them through their learning journey.

Benefits for the client administrators:

Your organization's learning champion can build and manage the group's learning experience and check on participant progress. The Client Administrator will be able to track users by accessing reports and information that will help facilitate an impactful learning experience.