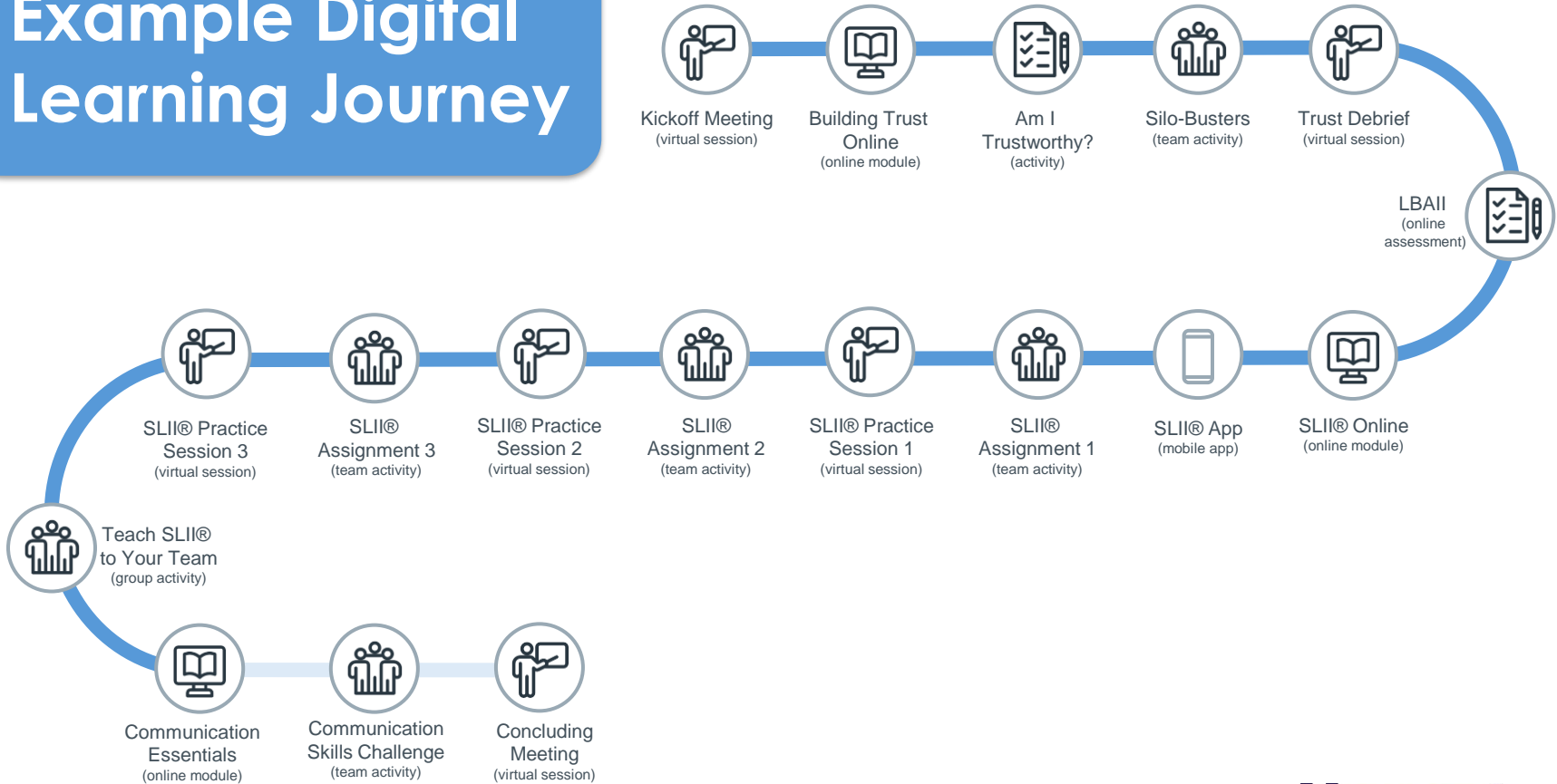


IMPACTFUL BLENDED LEARNING EXPERIENCES



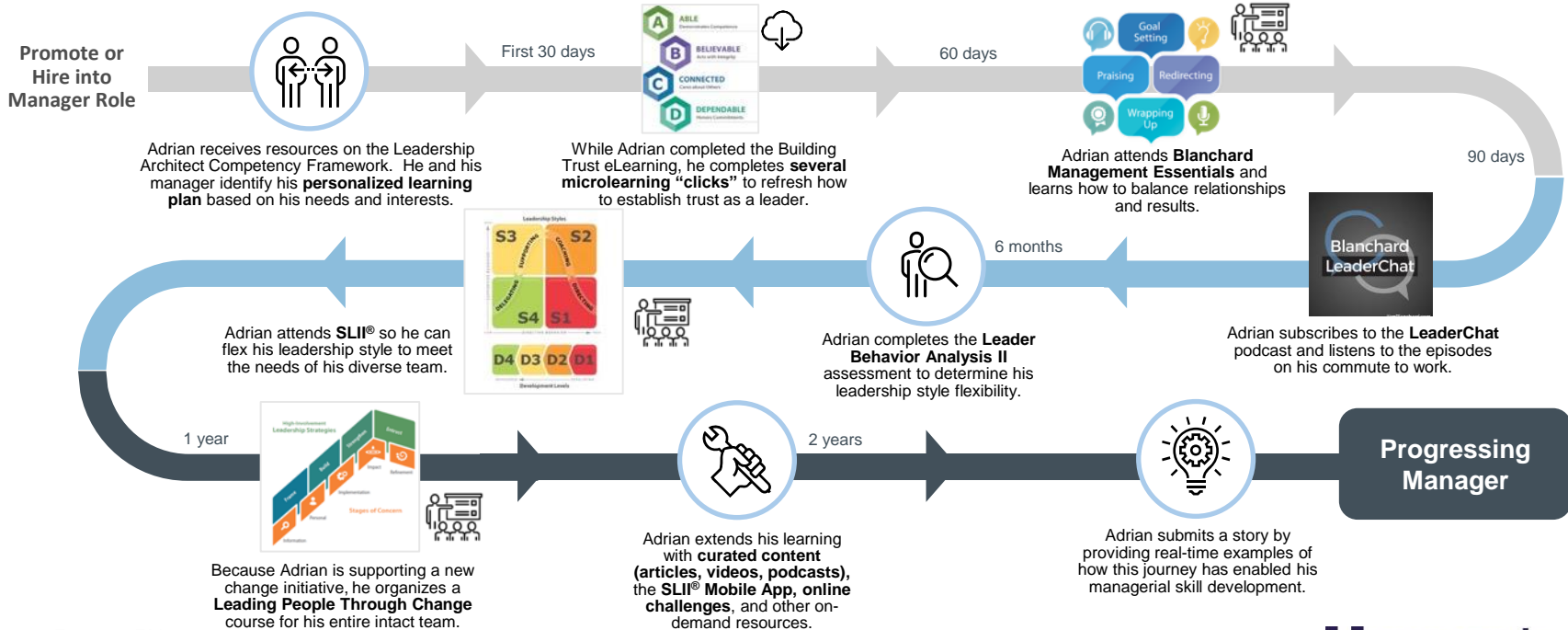
Example Digital Learning Journey



What Might a New People Manager's Journey Look Like?



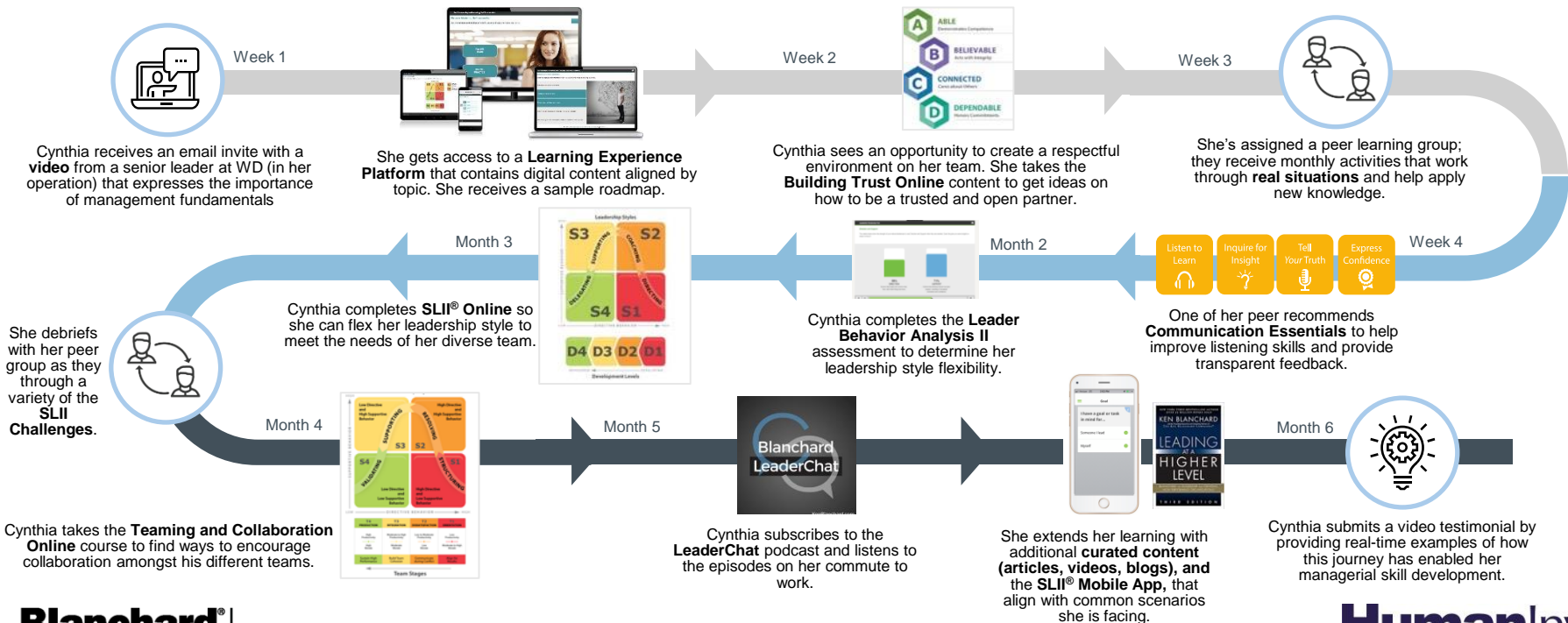
My Learning Challenge: *Transitioning to a new role has kept my schedule quite busy. My team has senior people and I know the decisions I need to make can upset people and impact productivity. I want to develop myself to be a stronger communicator and improve processes, which I have much more influence over, now that I'm a manager.*



What Might a Manager's Learning Journey Look Like?



My Learning Challenge: *Leading cross-functional teams within a matrix is challenging. Each team (and individual) has different needs. I'm having to manage change and influence a large network, even though many of the members don't report directly to me. I want to be authentic in how I approach the work. I want to be strategic, but it's hard when there are so many operational tasks I'm responsible for.*



What Might an Experienced Manager's Journey Look Like?



My Learning Challenge: *Leading cross-functional teams within a matrix is challenging. Each team (and individual) has different needs. I'm having to manage change and influence a large network, even though many of the members don't report directly to me. I want to be authentic in how I approach the work. I want to be strategic, but it's hard when there are so many operational tasks I'm responsible for.*

Complete New Manager Experience



Lina works with her manager to identify and create a **personalized learning plan** based on her needs and interests.

First 30 days



Lina refreshes her ability to lead situationally with **SLII Online** microlearning and self-study blends.

60 days



Lina attends a **virtual Coaching Essentials** to create an environment of trust and autonomy with her various teams.

90 days



Lina joins a book club on **Leading at a Higher Level**.

6 months



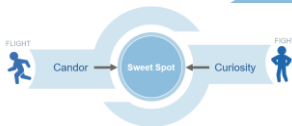
Lina engages with a **leadership coach** to help improve productivity in her role on a new project.

1 year



Lina attends **Team Leadership** to improve her teams' effectiveness, collaboration, and productivity.

2 years



Lina focuses on finding the sweet spot of communication with **Conversational Capacity**, as she has a team that isn't very forthright.



She comes certified to train **Legendary Service** and cascades the model in her teams to renew focus on the customer.

3 years

Lina extends her learning with **curated content** (e.g., **LeaderChat** podcast), the **SLII** and **Team Leadership Mobile Apps**, and other on-demand resources.



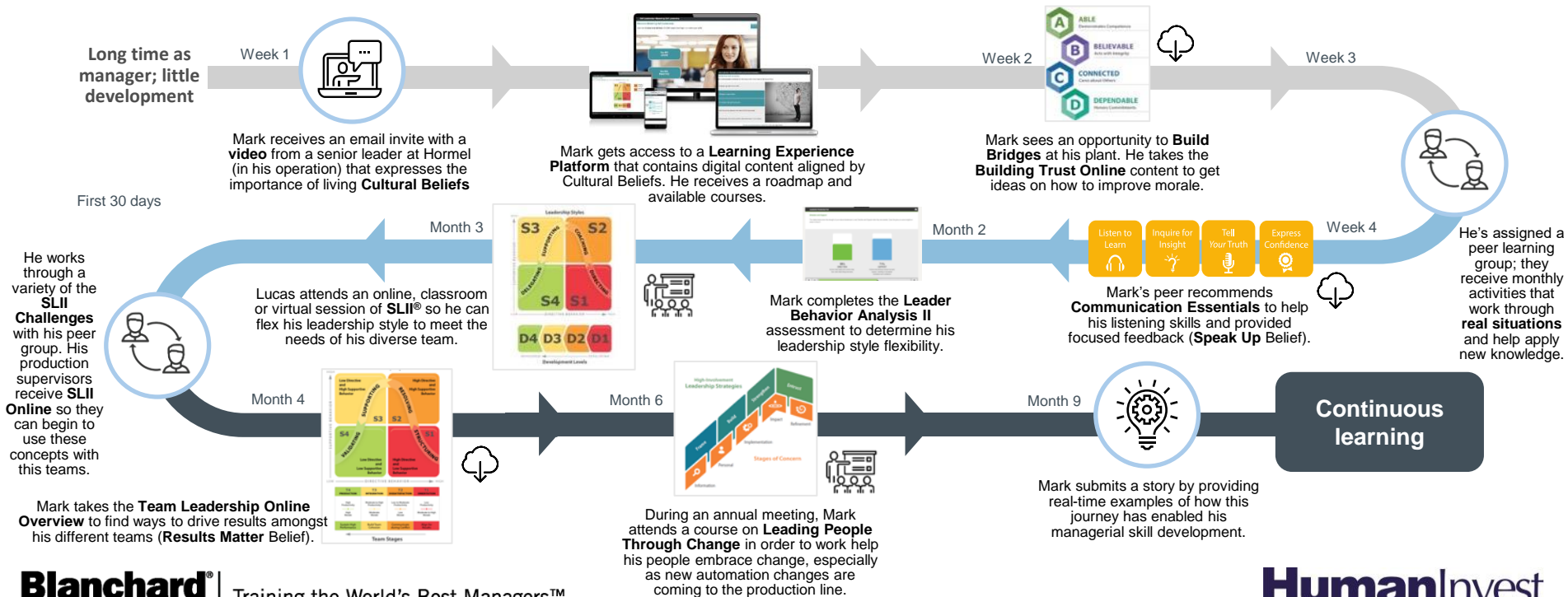
Lina becomes a **mentor** for New Manager Experience and shares her story of how her journey has enabled her mindset shift to a **lead at a higher level**.

Senior Leader

What Might an Plant/Area Manager's Journey Look Like?



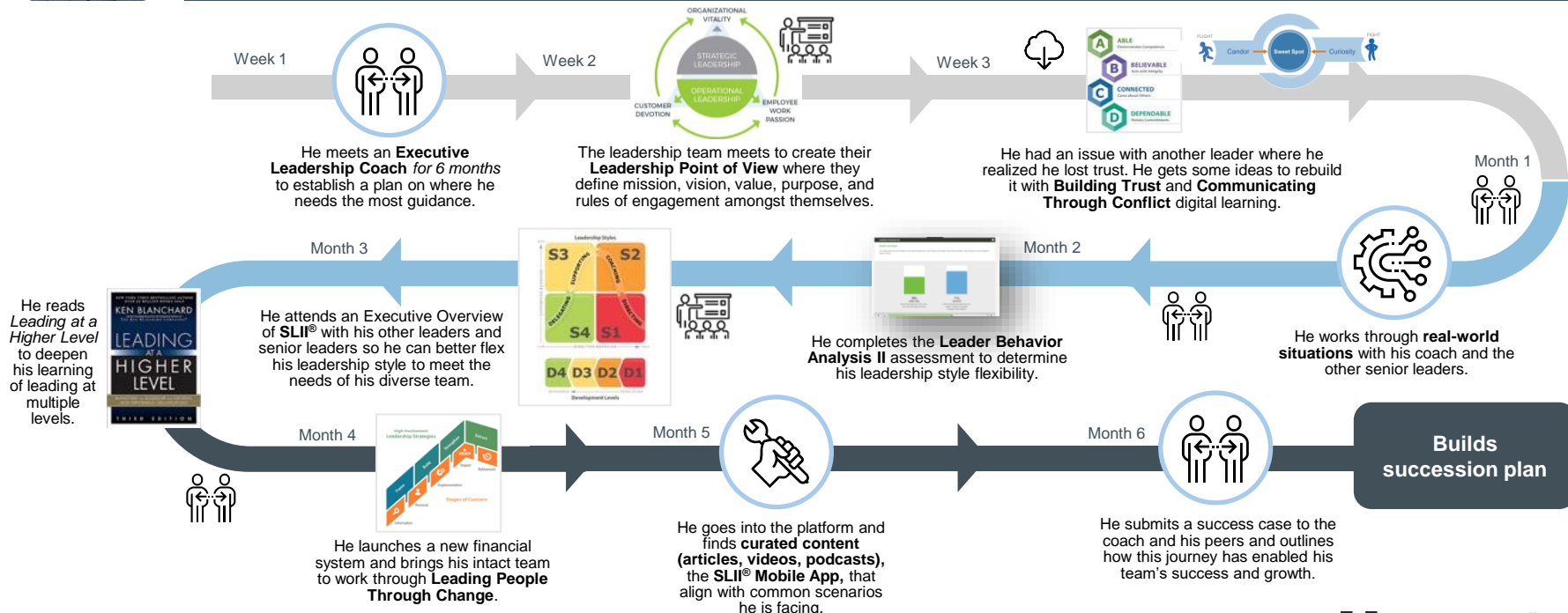
My Learning Challenge: *I'm managing several teams on the production floor, and each supervisor is different and each has different needs. I am trying to spend my time equally amongst them, but typically I'm spending most of my time with the team that is having most of the quality, safety and performance issues.*



What Might a Senior Leader's Journey Look Like?



My Learning Challenge: *I'm senior enough where I don't have much of an interest or desire to attend formal classroom trainings. I would prefer more individualized interventions and actually prefer when my people go to training so it takes some of the pressure off me to develop them.*



Ready to get started?

Blanchard's digital programs are flexible, self-paced, and scalable solutions that allow you to deliver world-class leadership training programs to dispersed learners across your organization. Our Virtual Learning Experiences are available for all our core leadership programs.

If you need an **integrated blended learning experience** that is **customized** to your needs, talk to an expert about how Blanchard's virtual and online solutions can help you.

Email: Contact@humaninvest.ro

Phone: (+40) - 21 318 89 27

Website: www.humaninvest.ro

